



# OPC Server FibroLaser III

## Installation and Configuration Manual

### Revision History:

Version	Date	Status
1.0	Sep 2015	Released.
1.1	Jan 2016	Add button to import/export zone configuration.
1.2	Feb 2016	Change the pre-alarm and fault values.
1.3	Feb 2016	Change the system values.

Property of S4S - Innovative Software Solutions and Engineering Services

We reserve all rights in this document and in the subject thereof. By acceptance of the document the recipient acknowledges these rights and undertakes not to publish the document nor the subject thereof in full or in part, nor to make them available to any third party without our prior express written authorization, nor to use it for any purpose other than for which it was delivered to him.



## Table of Contents

---

1. Glossary .....	3
2. Introduction .....	3
3. About the OPC Server FibroLaser III .....	4
4. System Requirements.....	5
5. Installation guide .....	6
5.1 Registration of the OPC Server .....	6
5.2 Authentication and Permissions.....	7
5.3 Licensing.....	12
5.3.1 How to obtain a license .....	12
5.3.2 Software license activation .....	12
6. System Configuration.....	13
6.1.1 FibroLaser III controller (OTS30XX).....	13
6.1.2 OPC Server .....	15
7. OPC TAGs.....	24

# 1. Glossary

Acronym	Description
<b>OPC</b>	OLE for Process Control
<b>OLE</b>	Object Linking and Embedding
<b>GUI</b>	Graphic User Interface
<b>SCADA</b>	Supervisory Control And Data Acquisition
<b>FibroLaser III</b>	Siemens Linear Heat Detection systems
<b>OTS30xx</b>	Siemens Linear Heat Detection Controllers

# 2. Introduction

This is a User Manual for the OPC Server FibroLaser III . The Server communicates with FibroLaser III controllers over Ethernet and supports data exchange with Client's via Microsoft's Object Linking and Embedding (OLE) for Process Control (OPC).

S4S's OPC Server is a software package that operates as an OPC driver of Siemens Management stations as MM8000, Desigo CC™ and Cerberus™ DMS. The OPC Server meets the latest standard of OPC DA2.0 that allows connections to various kinds of devices and host OPC machines.

The manual is organized to provide an overview of OPC technology, detailed information on the configuration environment and a complete list of OPC Tag's provided by the OPC Server.

## 3. About the OPC Server FibroLaser III

The OPC Server FibroLaser III is based on OPC Data Access, known as 'DA', which provides real-time data from FibroLaser III controllers to management stations with OPC client drivers as MM8000, DesigoCC™ and Cerberus™ DM.

The server communicates with OTS 30xx via the LON protocol over TCP-IP

Protocol has been designed to be compatible with the previous versions of the OTS public code protocols.

The OPC Server reads and writes data to and from FibroLaser III controllers via Ethernet.

The Server has a graphical user interface (GUI) configuration environment with an "Explorer" look and feel. The configuration environment allows the Server to be configured with information such as controller IP addresses and available global variables so that the Server can communicate with these systems on behalf of Clients.

Application Name	: OPC-FibroLaserIII.exe	
OPC NAME	: "S4S.OPC-FibroLaser III"	(Can be configured in xml file)
OPC DESCRIPTION	: "OPC Server – FibroLaser III"	(Can be configured in xml file)
OPC GUID	: {4DA870F2-A36A-46FF-BD36-A21511B9FF80}	

## 4. System Requirements

The OPC Server FibroLaser III application runs on any hardware which supports Windows Server 2003/2008/2012, Windows XP, Windows 7 or Windows 8 with DCOM, Visual C++ 2010 Redistributable Packages and .NET Framework 4 Installed.

The system must have 10 Mb of free disk space to install the program and 1 Gb of free memory is required to load and run the application. All systems information is stored in the server's disk. For configuration purpose a monitor connected to the computer is required.

The OPC server is a 32 bit application which runs on both 32/64 bit operating systems.

### Hardware characteristics recommended

- CPU i5 high-end (for example INTEL Core i5 4690K) or i7 mid-range (for example Intel Core i7-4770K)
- RAM : 8GB

### Checks on the network

Since the Server communicates with the FibroLaser OTS 30XX over TCP-IP, an Ethernet network must be in place. The network itself should be fully tested and be known to operate before attaching the controllers and the Server computers. Contact your system administrator for assistance or consult instructional documentation and manuals to setting up the network. It is beyond the scope of this Users Manual to discuss networking topics in any detail.

Once the network is in place and the Server computers and controllers are attached, check connectivity using available network testing tools and programs such as ping command.

**Note:** When the OTS 30XX configuration is modified, a re-start of the LON Protocol is carried out and a disconnection on communication is detected.

## 5. Installation guide

Before installation of the OPC server, make sure it is installed the Visual C++ 2010 Redistributable Packages, if not please let install it on your computer.

The OPC Server FibroLaser III is provided with own specific setup. The setup includes all the dependencies (ex. *WtOPCSvr.DLL* - OPC server library) in order to ensure the proper functioning of the application.

- *S4S\_OPC\_Library.dll*
- *S4SGenCodeInfo.dll*
- *S4SGenCodeInfoLibrary.dll*
- *S4SObjectListView.dll*
- *WtOPCSvr.dll*
- *SysInfo.dll*

Two security issues require attention:

- Installation needs Administrator rights;
- Windows Firewall must be configured;
- DCOM security settings must be configured. This guide describes how to make the necessary settings.

### 5.1 Registration of the OPC Server

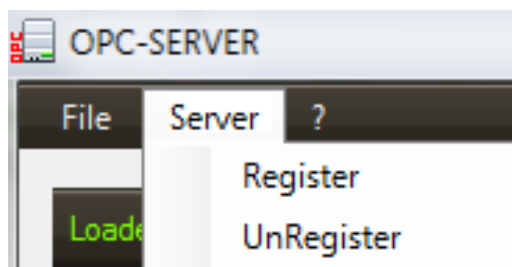


Image 1 Register and UnRegister

- To register the Server, you must click 'Register' in the menu 'Server'.
- To unregister the OPC Server, you must click 'UnRegister' in the menu 'Server'.

## 5.2 Authentication and Permissions

After OPC Server registration the COM security has to be enabled, so OPC Client can automatically call the OPC Server.

Below are showed all steps needed to enable the security COM, using 'DCOMCNFG1':

1. Verify that the DCOM security registration was executed successfully;
2. Run DCOMCNFG (Only the administrator can run '*Dcomcnfg.exe*'). To use '*RUN Command Windows*' or '*Command Prompt*', to open DCOMCNFG program;

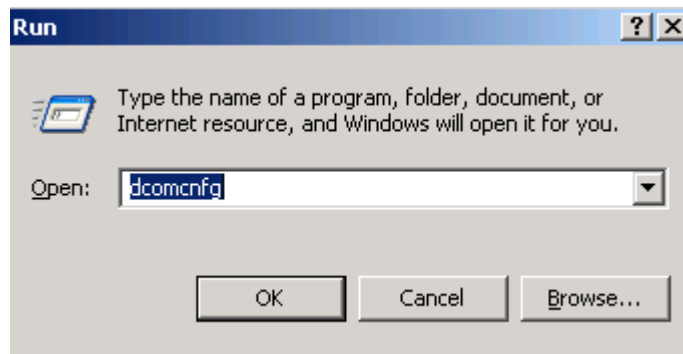


Image 2 DCOMCNFG - Run

3. Locate the My Computer item by expanding the following nodes: Component Services > Computers;
4. Right-click My Computer and select Properties.

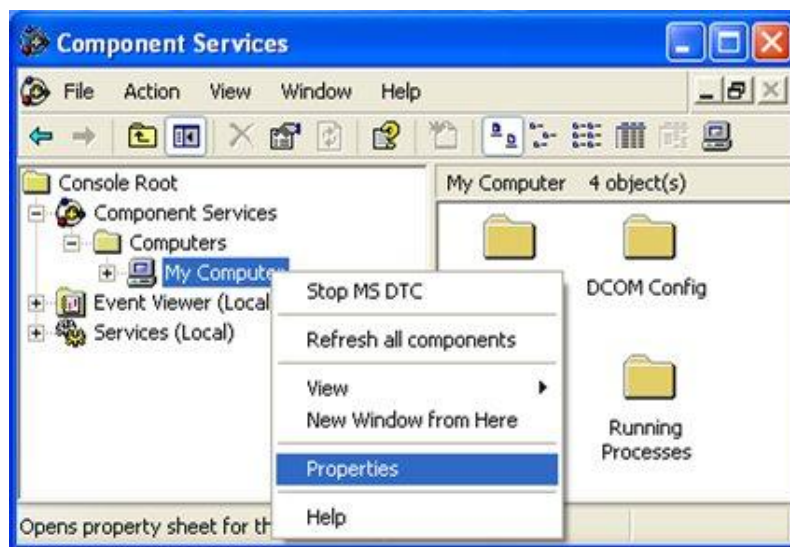


Image 3 Component Services Property

<sup>1</sup> **Dcomcnfg.exe** provides a user interface for modifying certain settings in the registry. By using Dcomcnfg.exe, you can enable security either on a computer-wide or a process-wide basis. You can enable security for a particular computer so that when a process does not provide its own security settings, either programmatically or through registry values, the values set by Dcomcnfg.exe will be used. Or you can use Dcomcnfg.exe to enable security for a particular application only.  
*Note:* You must be an administrator to run Dcomcnfg.exe.

- Go to the COM Security tab. Edit the default settings to Access Permission, hereby adding 'ANONYMOUS LOGON' and 'Everyone' and giving all access permissions to that group of users. Repeat the setup for the limit settings.

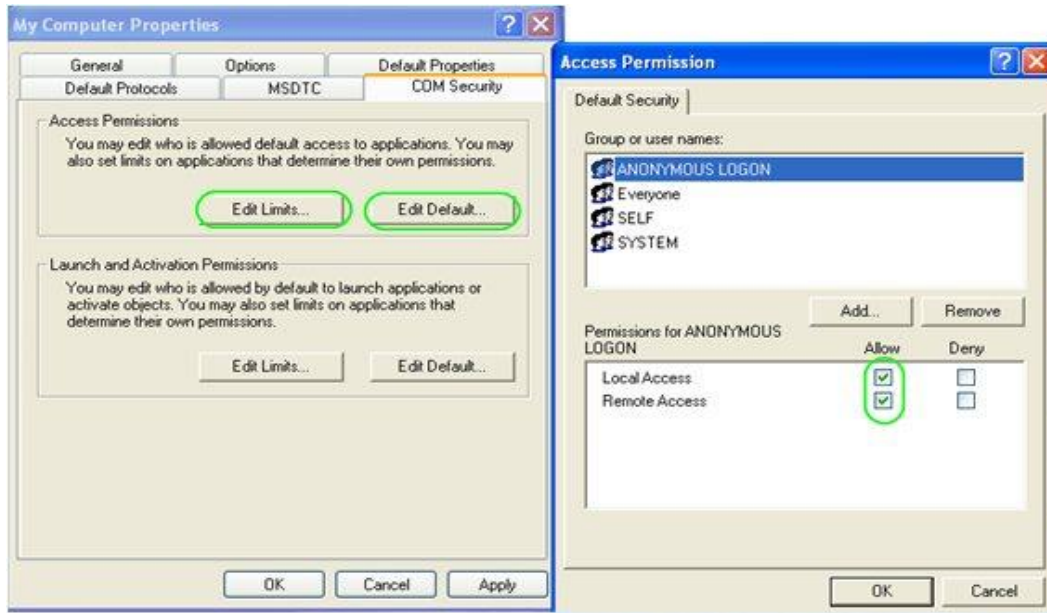


Image 4 COM Security Access Permissions

- Now edit the default settings for Launch and Activation Permissions, hereby adding 'ANONYMOUS LOGON' and 'Everyone' and giving all access permissions to that group of users. Repeat the setup for the limit settings.

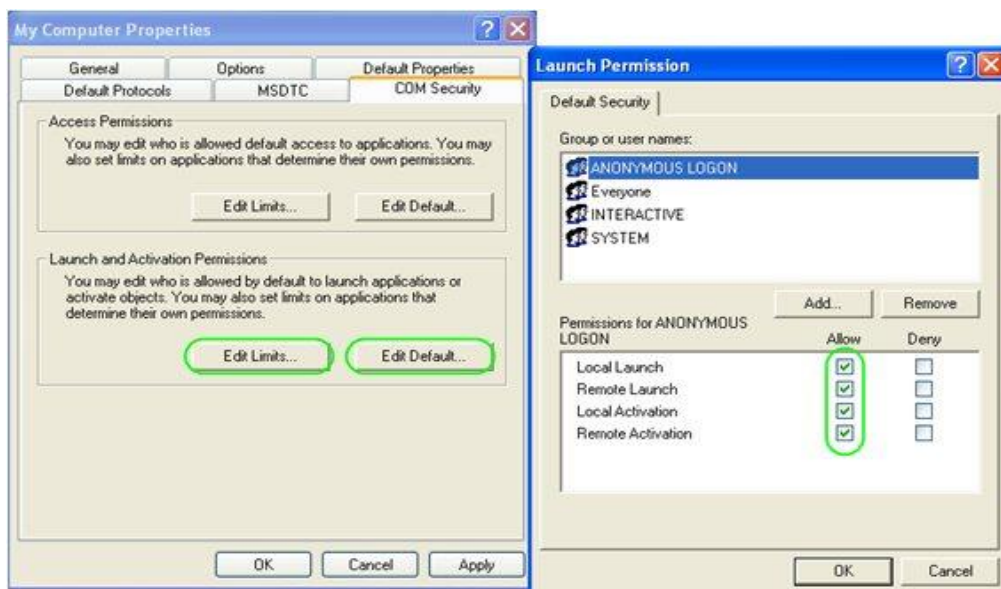


Image 5 COM Security Launch and Activation Permissions

The new settings will take effect when the OPC Client has been restarted. Therefore, close the Component Services (dcomcnfg program) and restart the OPC Client application.



7. Using tree view DCOMCMFG to check the all DCOM registered.

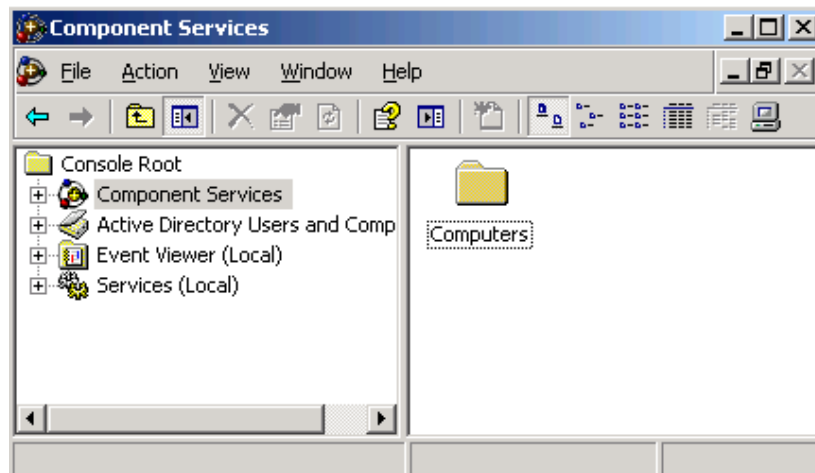


Image 6 DCOMCMFG

Select the 'Component Services' item, than 'Computers', than 'My Computer' and 'DCOM Config' item;  
Find the OPC Server name registered in the DCOM list, it must be the same as configured in the xml file.

Xml file example:

```
<OPC_PROTOCOL Delimiter=";" OPC_name="OPC-SERVER" OPC_description="OPC Server - Fibro Laser" ...>
```

OPC Server name is registered: "OPC-Fibro Laser", for this example the name is "OPC-SERVER".

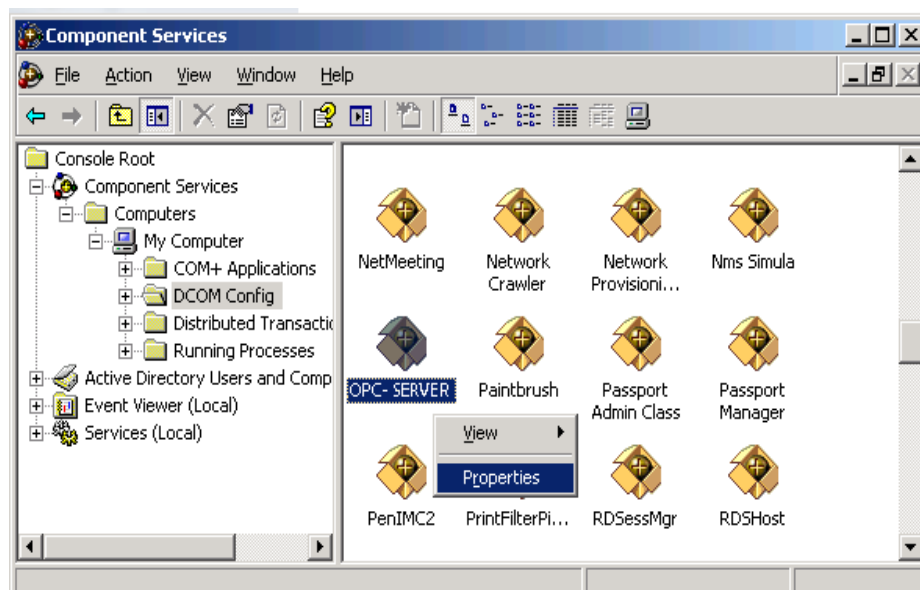


Image 7 DCOMCNFG - Find OPC Server

8. OPC Server Configuration Permissions. Select the 'OPC-SERVER' registration then the properties (pushing the right button) and then select the 'security' tab:
  - a. Select 'Customize' in the 'Configuration Permissions' and then click the 'Edit' button.

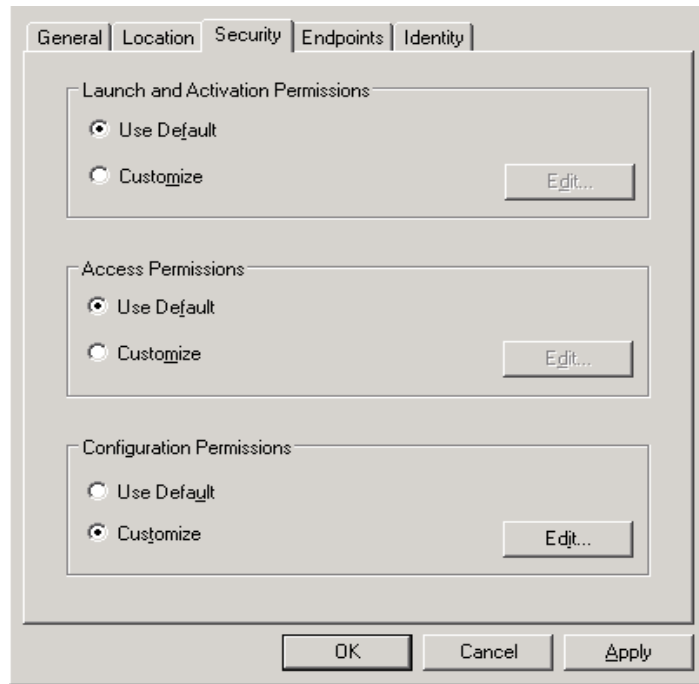


Image 8 DCOMCNFG – Configuration Permissions

- b. Select 'Add' button to add a new user and then, in the new form, select the 'Advanced' button.
- c. Click the 'Find' button to search the 'everyone' and then 'ANONYMOUS LOGON' users.

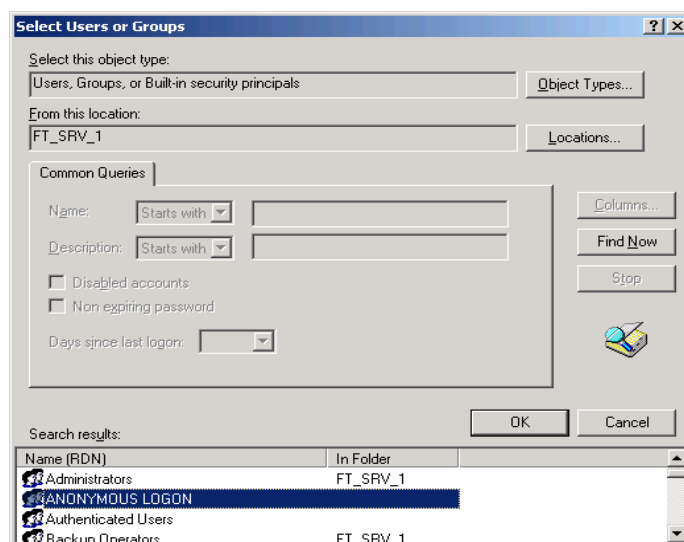


Image 9 DCOMCNFG – Find User

- d. Add 'everyone' and 'ANONYMOUS LOGON ' user;

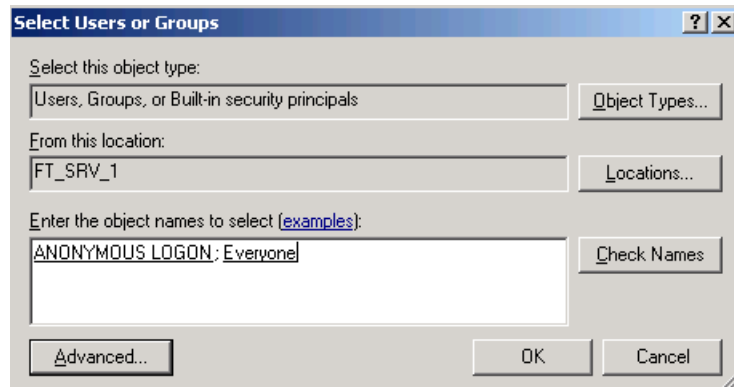


Image 10 DCOMCNFG - Add users

- e. Provide all permission to added users.
9. Set OPC Server identity. Select the 'identity' tab:  
Set 'This user' and insert User and Password used to access MM8000.

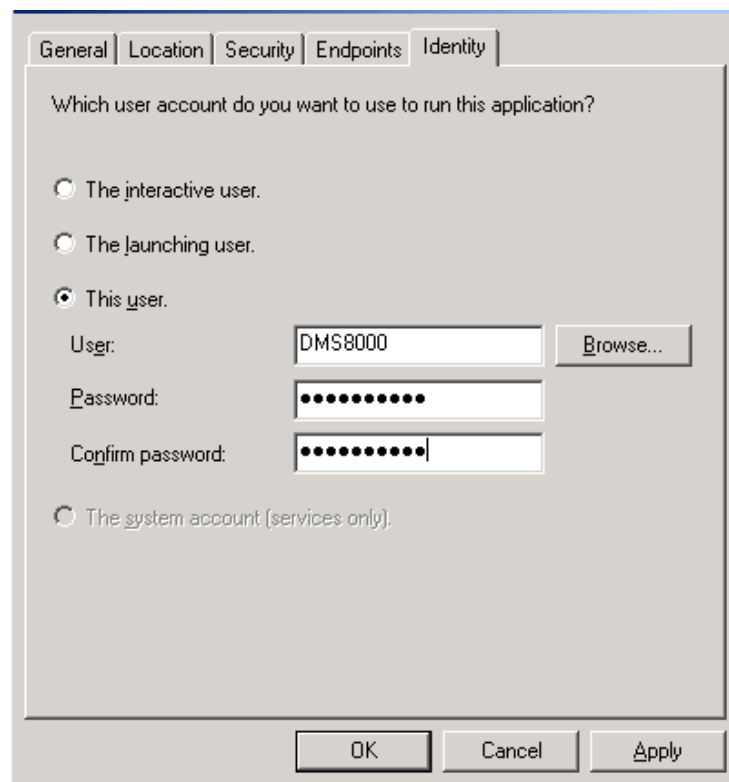


Image 11 DCOMCNFG – Identity

**Note:** The demo version runs only with Launching or Interactive User. A different user from Launching or Interactive can be used ONLY if the OPC-Server runs with a registered PAK.

## 5.3 Licensing

To run the OPC Server without any time restriction a regularly software license has to be purchased from S4S.

A software license defines the maximum configuration managed by the OPC Server in terms of:

- N° of FibroLaser III controllers (OTS30xx)
- N° of channels per OTS30xx (Optic fibers)
- Length of Optic Fiber (1,2,4,6,10 Km) per OTS30xx

Without the software license the OPC Server FibroLaser III runs in demo mode with full functionality for two hours. The demo mode runs only with Launching or Interactive User (see OPC Server identity 9).

### 5.3.1 How to obtain a license

A software license must be obtained from S4S and the request has to be done from the computer where is installed the OPC Server. From the its User Interface selecting "?" then "Information about OPC Server FibroLaser III" then "View license" then "Product activation".

In the 'Product Activation' the following fields have to be filled :

- Customer installation data
  - User name,
  - Organization,
  - Email,
- OTS 30XX configuration in terms of: numbers of FibroLaser III controllers, numbers of channels for controller and fiber length per channel;
- Code generation (via the 'Generate new user code' button);
- Save the code and directly send it to 'orders@s4s.it ' or send it via 'Send' button if it is configured a mail box on the computer.

A PAK (Program Authorization Key) code will be generated for that specific configuration and for the PC from which has been requested the software license.

### 5.3.2 Software license activation

To activate your license you must access to the 'Product Activation' dialog and through the 'Load New License' button you load the license file released by S4S.

A dialog will appear for feedback at the end of loading to indicate the outcome of activation.

## 6. System Configuration

The purpose of this section is to provide the necessary information for configuring the FibroLaser III controller and the OPC Server.

### 6.2.1 FibroLaser III controller (OTS30XX)

To enable the communication with the OPC-Server, the OTS30xx has to be configured setting connection parameters and enabling the LON protocol.

The following screen shows how to configure the OTS30XX via Fibro Manager windows application.

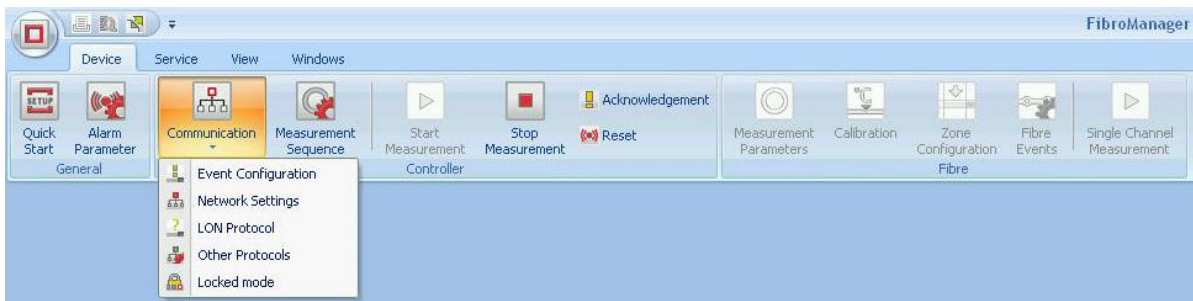


Image 12 - FibroLaser III Communication Settings

In the **Network Settings** section it is possible to set the OTS30XX IP address. This IP address will be used by the OPC Server configuration tool to connect the FibroLaser III controller

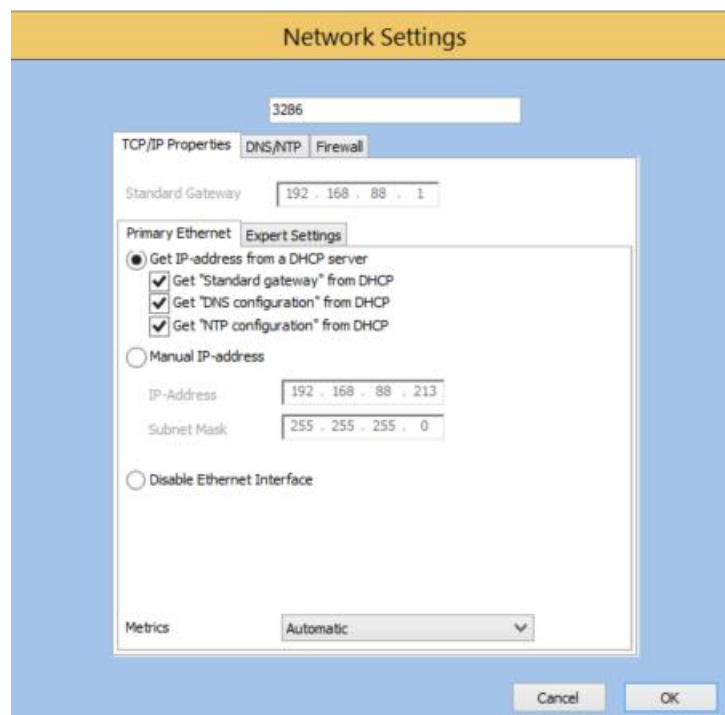


Image 13 FibroLaser III Network Settings

In the **LON Protocol** section, to enable the LON Protocol, select the check-box "Use TCP" and then set the communication Port.

The value of the Port will be set in the OPC Server to connect the OTS30xx.

In the **transmitted data** section is possible to define which data type the OTS30XX has to be transmitted: Notices, Alarms, Alarm locations, Zone Minimum temperature, Zone Maximum temperature, Zone Mean temperature, Temperature data and backscattering data.

For MM8000 (Danger Management System) is sufficient to enable the following data: Notices, Alarms and Alarm locations, for system as Desigo CC™, Cerberus™ DMS, WinCC and SCADA, can be enabled the following data : Notices, Alarms, Alarm locations, Zone Minimum temperature, Zone Maximum temperature, Zone Mean temperature, Temperature data

**Transmitted data setting for MM8000 :**

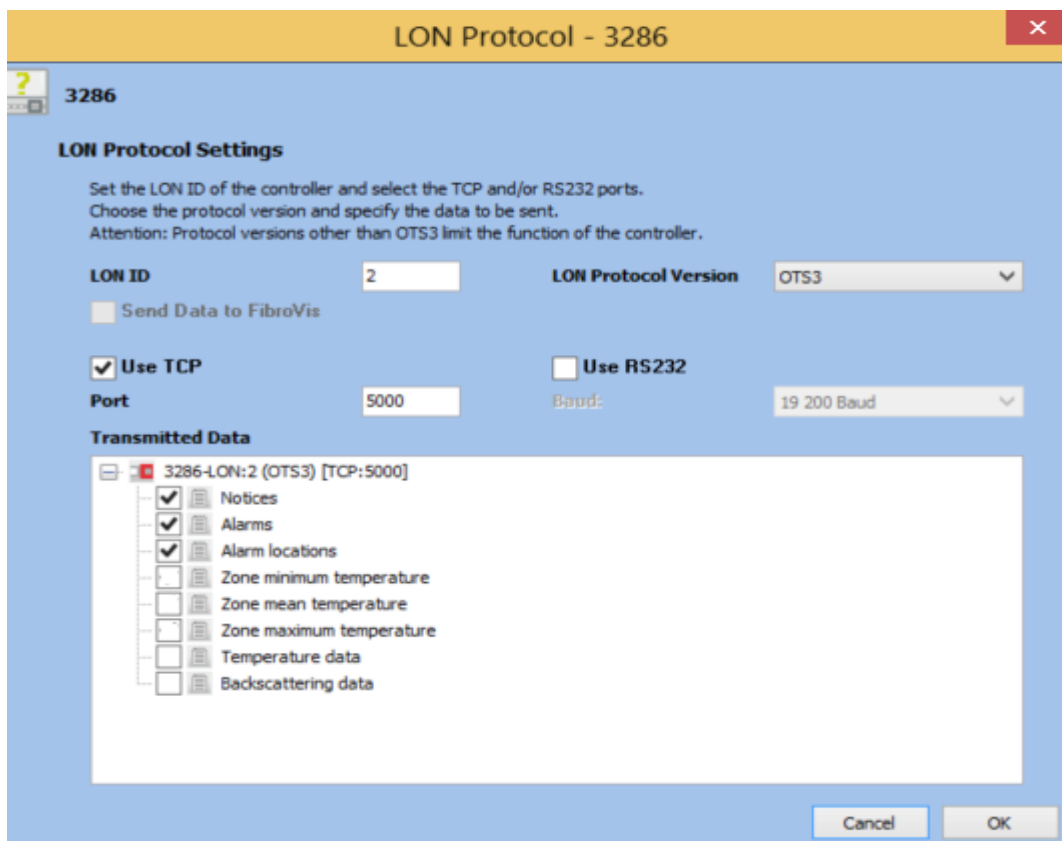


Image 14 FibroLaser LON Protocol Transmitted data setting for MM8000

## Transmitted data setting for DesigoCC, Desigo Insight, SCADA :

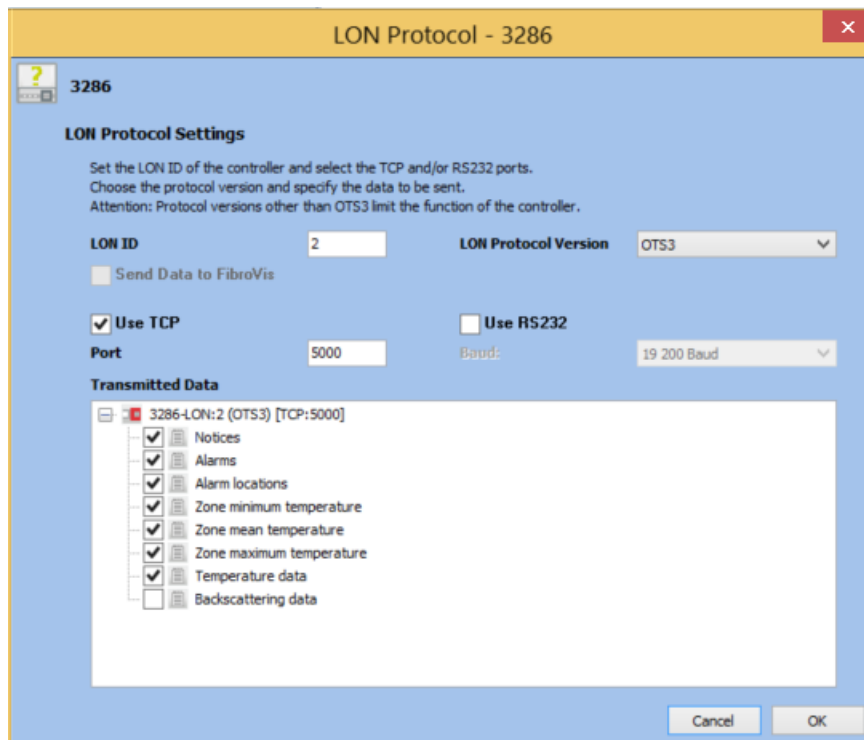


Image 15 FibroLaser LON Protocol Transmitted data setting for DesigoCC

## 6.2.2 OPC Server

After a successful installation, the OPC Server has to be configured in order to communicate with the OTS 30xx and acquire data from it.

The OPC Server FibroLaser III configuration tool consists of two sections: Settings and Subsystems.

- **SETTINGS:** Is the section where to define the OPC Server general parameters;
- **SUBSYSTEMS:** Is the section where to configure the subsystems (FibroLaser III controllers) that the OPC Server has to connect.

## SETTINGS

The **SETTINGS** section allows configuring the OPC Server name and description and the main operating parameters:

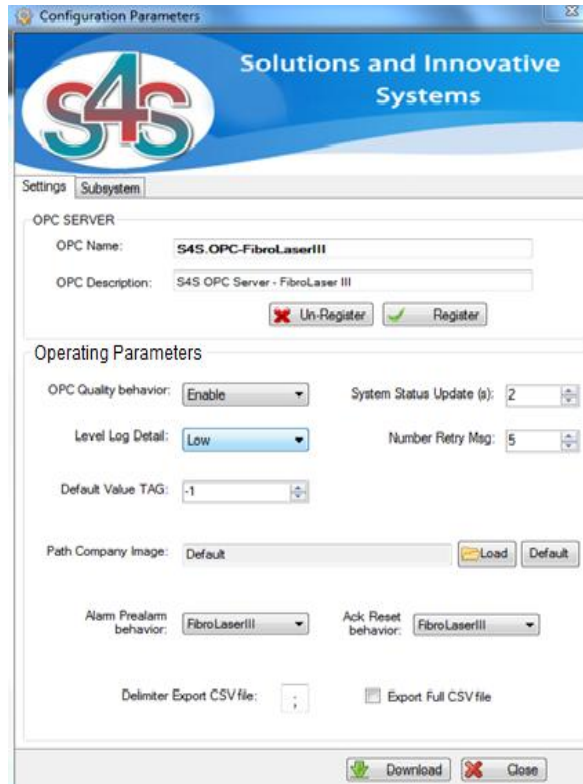


Image 16 OPC Server – SETTINGS

### OPC Server

After entering the OPC Server name and description you must register the application with the command "Register". In case you want to change the name and description you must first unregister it then register it again with the new name.

### Operating Parameters

- *OPC Quality behavior*  
Enables or disables the management of the quality property in accordance with the standard OPC. Default is : Enabled
- *System Status Update (s):*  
Polling delay in seconds for updating the OTS 30xx status. Range Value: 1-3600 [s]  
Default value: 3 [s].
- *Level Log Detail :*  
Defines the level of detail of OPC LOGs presented on the screen.  
Three levels are supported : LOW, MEDIUM and HIGH



- LOW - [Default value] – Presents the system diagnostics and commands received from an OPC client .
- MEDIUM – Presents all OPC transactions (change of status, commands, diagnostics).
- HIGH - Presents all OPC transactions (change of status, commands, diagnostics) with the native messages sent by the OTS. \). The detail level is verbose and can slow down the application. Normally used only for Debug.

All logs are saved on a File.txt (C:\OPC- FibroLaser \LOG.

- *Number Retry Msg*

Number of polling messages sent to the OTS30xx, without any response, before to set the communication status to disconnected. Range Value: 1-50 - Default value: 5

- *Default Value TAG*

Default value assigned when the OPC Server does not know the real value of TAGs, for example at the start-up of the OPC. Default value is : -1.

- *Path logo image :*

Defines the logo to be presented on top of the application. Defaul value : S4S logo

- *Alarm-Prealarm behavior :*

Defines how to handle the zone alarm and prealarm OPC tags :

- FibroLaserIII : The alarm and pre-alarm value are aligned with the value sent by the FibroLaserIII, so you can have both alarm and pre-alarm active
- Alarm-Prealarm : In this case when a zone alarm tag is set to a value active the pre-alarm tag of the same zone is set to a value no-active.

Default value: FibroLaserIII

- *Ack-Reset behavior :*

Defines how to handle the event status of an OPC tag value :

- FibroLaserIII : The OPC tag value takes the value sent by the FibroLaserIII (0=no active, 1 = active).
- Ack-Reset : The OPC tag value is set in accordance to the Ack and Reset commands sent to the OTS. Es. 0 = event not-active, 1= event active, 2=event silenced (Ack command sent) and ready to be reset. After the command reset the value return to the value = 0.

Default value: FibroLaserIII

- *Delimiter Export CSV file :*

Defines the delimiter character used in the CSV file. Default value: ;

- *Export full CSV file :*

Whether NOT checked the CSV export file contains the following data;

Full Tag name	Tag description text	OPC Class
SUBSYSTEM_1.FIBRO_CHANNEL_1.Connection	Connection	1
SUBSYSTEM_1.FIBRO_CHANNEL_1.FibreBreak	FibreBreak	5
SUBSYSTEM_1.FIBRO_CHANNEL_1.Alarm	Alarm	2
SUBSYSTEM_1.FIBRO_CHANNEL_1.FibreAlarmPositions	FibreAlarmPositions	8
SUBSYSTEM_1.FIBRO_CHANNEL_1.FireMagnitude	FireMagnitude	0
SUBSYSTEM_1.FIBRO_CHANNEL_1.FireDirection	FireDirection	0
SUBSYSTEM_1.FIBRO_CHANNEL_1.ConfigurationAligned	ConfigurationAligned	7
SUBSYSTEM_1.FIBRO_CHANNEL_1.Command	Command	0
SUBSYSTEM_1.FIBRO_CHANNEL_1.ZONE_UKNOWN.Name	Name	0
SUBSYSTEM_1.FIBRO_CHANNEL_1.ZONE_UKNOWN.Alarm	Alarm	2
SUBSYSTEM_1.FIBRO_CHANNEL_1.ZONE_UKNOWN.Prealarm	Prealarm	3
SUBSYSTEM_1.FIBRO_CHANNEL_1.ZONE_UKNOWN.Fault	Fault	4

Whether is checked the CSV export file contains the following data (for DesigoCC);

#	[Server name (DB element)]	[ProgId]	[Description]	[Name]				
#	[opc_3]							
#	# server = "FibroLaserIII_OPC_Server" ""4DA870F2-A36A-46FF-BD36-A21511B9FF80""							
#	S	FibroLaserIII	S4S.OPC-FibroLaserIII	S4S OPC Sen	FibroLaserIII_OPC_Server			
#	# Groups Data: G	[Group name (DB element)]	[Description]	[Name]				
#	G	Zones	Zones	Zones				
#	# Tag Data: T	[Tag name]	[Type]	[Direction]	[PVSS DP name]	[PVSS DPT name]	[PVSS DPE n]	[Description] [Name]
#	T	SETTINGS.System_status_update[s]	INT32	IO	System_status_update[s]	GMS_OPC_MultiStateInpu	System_stat	System_status_update[s]
T	SETTINGS.Date_XML_Upload	STRING	IO	IO	Date_XML_Upload	GMS_OPC_MultiStateInpu	Date_XML_U	Date_XML_Upload
T	SETTINGS.License_State	INT16	IO	IO	License_State	GMS_OPC_MultiStateInpu	License_Sta	License_State
T	SUBSYSTEM_1.Configured	INT16	IO	IO	Configured	GMS_OPC_MultiStateInpu	Configured	Configured
T	SUBSYSTEM_1.Description	STRING	IO	IO	ID	GMS_OPC_MultiStateInpu	ID	ID
T	SUBSYSTEM_1.PortState	INT16	IO	IO	PortState	GMS_OPC_MultiStateInpu	PortState	PortState
T	SUBSYSTEM_1.ConnectionState	INT16	IO	IO	Connection State	GMS_OPC_MultiStateInpu	Connection S	Connection State
T	SUBSYSTEM_1.SoftwareVersion	STRING	IO	IO	SoftwareVersion	GMS_OPC_MultiStateInpu	SoftwareVe	SoftwareVersion
T	SUBSYSTEM_1.ControllerAddress	INT16	IO	IO	ControllerAddress	GMS_OPC_MultiStateInpu	ControllerAd	ControllerAddress
T	SUBSYSTEM_1.MeasurementState	INT16	IO	IO	MeasurementState	GMS_OPC_MultiStateInpu	Measuremen	MeasurementState
T	SUBSYSTEM_1.FibreBreak	INT16	IO	IO	FibreBreak	GMS_OPC_MultiStateInpu	FibreBreak	FibreBreak
T	SUBSYSTEM_1.Output.Output_1	INT16	IO	IO	Output_1	GMS_OPC_MultiStateInpu	Output_1	Output_1
T	SUBSYSTEM_1.Output.Output_2	INT16	IO	IO	Output_2	GMS_OPC_MultiStateInpu	Output_2	Output_2
T	SUBSYSTEM_1.Output.Output_3	INT16	IO	IO	Output_3	GMS_OPC_MultiStateInpu	Output_3	Output_3
T	SUBSYSTEM_1.Output.Output_4	INT16	IO	IO	Output_4	GMS_OPC_MultiStateInpu	Output_4	Output_4

## SUBSYSTEM

The **SUBSYSTEM** section allows to define the number and properties of the subsystems (OTS 30xx) to be connected to the OPC Server.



The "Add New" button is used to add new subsystem while the button "Remove" remove it. The arrow buttons allow selecting the subsystem to configure. The number on the left represents the subsystem to be configured while the number on the right represents the maximum number of subsystems defined with the "Add" and "Remove" buttons. For each subsystem (OTS) you must fill out the section "connection" and the section "Zone"

## Connection

The connection section allows configuring information regarding the OTS30xx communication parameters

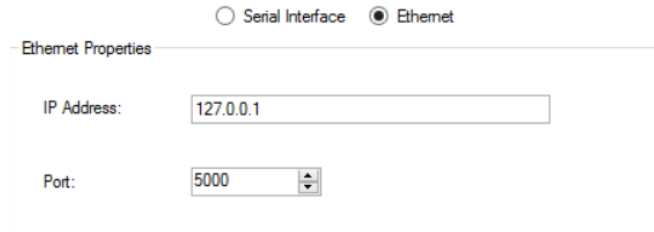


Image 17 Configuration - SUBSYSTEM Connection

- **Description**  
Is the description of the subsystem (OTS). At the start-up the OPC Server creates by default one subsystem which description is set to "EXAMPLE". The description can be freely modified.
- **TAG Name**  
The TAG name is used to identify the subsystem OPC TAG. The default value is 'SUBSYSTEM\_(ID)'.
- **Ethernet**
- **IP Address**  
IP address of the OTS30xx to be connected. The default is 127.0.0.1 (localhost).

- *Port*

Port number of the OTS30xx to be connected. The default is 1234.



Serial Interface     Ethernet

Ethernet Properties

IP Address:

Port:

- *Serial Interface*

- *Port Name*

Port Name of the OTS30xx to be connected. The default is COM1;

- *Baud Rate*

Baud Rate of the OTS30xx to be connected. The default is 19200;

- *Data Bits*

Data Bits of the OTS30xx to be connected. The default is 8;

- *DTR Enable*

DTR Enable of the OTS30xx to be connected. The default is true;

- *Flow*

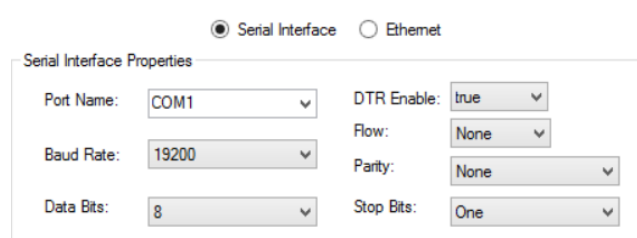
Flow of the OTS30xx to be connected. The default is None;

- *Parity*

Prity of the OTS30xx to be connected. The default is None;

- *Stop Bits*

Stop Bits of the OTS30xx to be connected. The default is One;



Serial Interface     Ethernet

Serial Interface Properties

Port Name:     DTR Enable:

Baud Rate:     Flow:

Data Bits:     Parity:

Stop Bits:

- *LON ID*

The LON addresses are used to identify the OTS controllers in a network structure. Note that each LON address MUST be unique in each network segment. Range

value: 1-255 (LON address 1, which has been used to identify Charon3 is not used for OTS3/LHD3 system).

Default value: 2

- *Fibro Channels*

Number of the OTS30xx Fibro Channels configured by the Fibro Manager. Range value : 1-48

Default value : 1

- *Outputs*

Number of Outputs configured in the OTS30xx by the Fibro Manager. Range value : 0-112.

Default value : 10.

- *Inputs*

Number of Inputs configured in the OTS30xx by the Fibro Manager. Range value: 0-112.

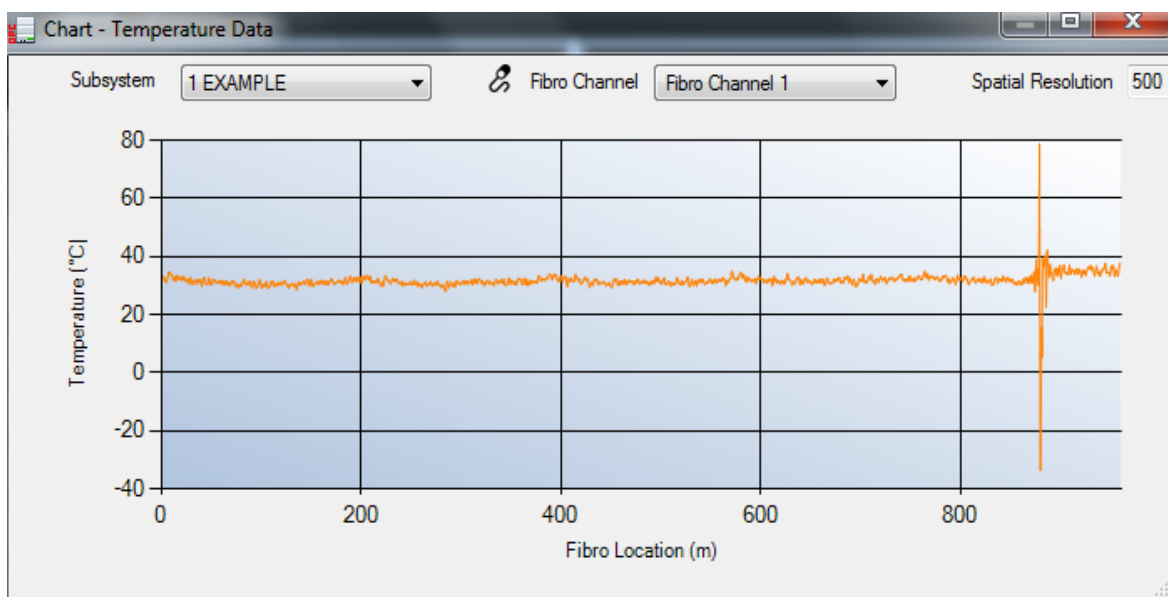
Default value: 4.

- *Temperature data*

Whether checked enables the reading of temperature data transmitted by the OTS30xx. Temperature data can be visualized in a chart that can be activated by the User Interface menu.

OPC Server generates a number of TAGs OPC as the number of measurement points sent from OTS30xx (the number of points is in relation to the OTS30xx resolution). The OPC TAG name is defined according to the position (in meters) of measurement, while the OPC TAG value shows the temperature measured in that instant.

The OPC path is: *TEMPERATURE\_DATA.Meter\_{value}* where {value} is the position in meter (ex. *TEMPERATURE\_DATA.Meter\_10\_5* = 10,5 meter )



## Zones

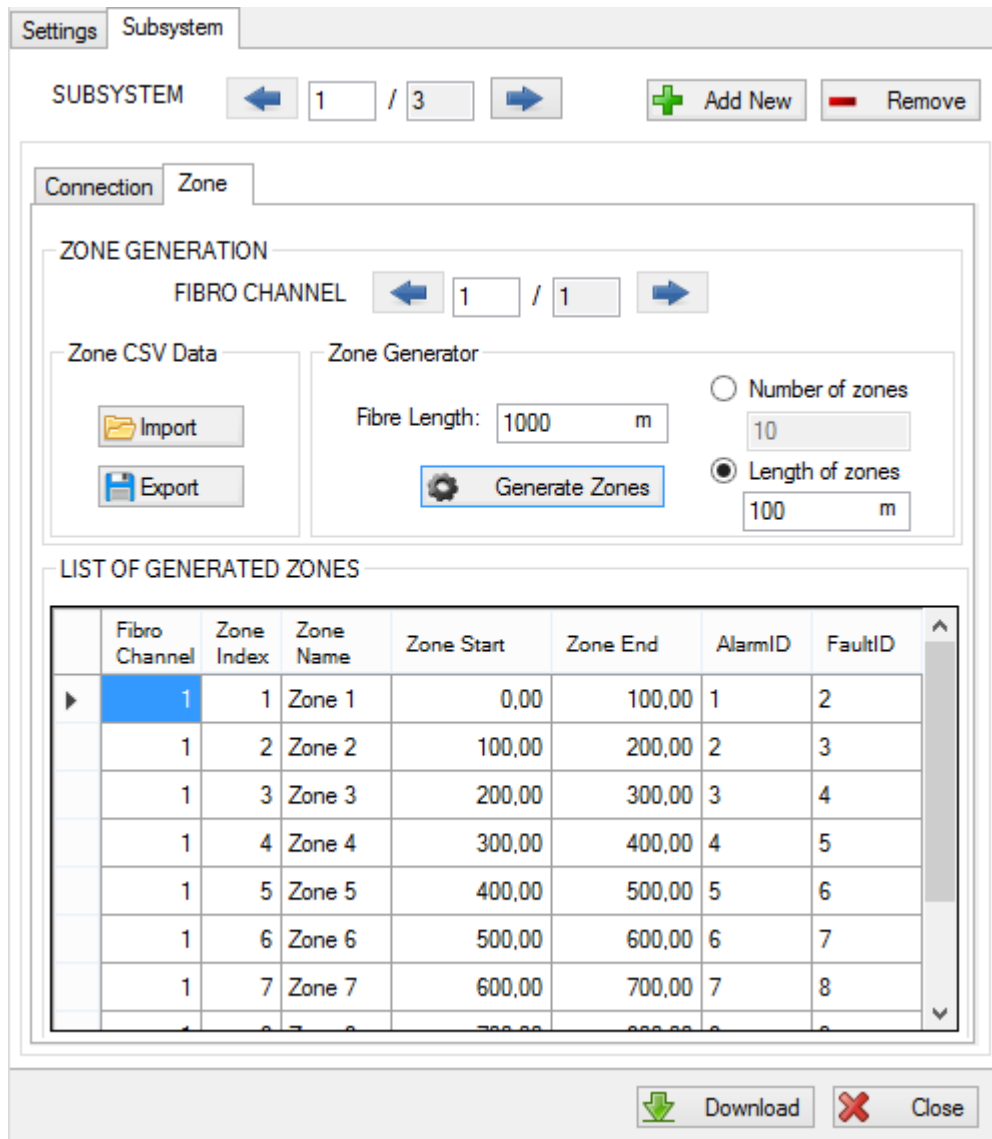


Image 18 Configuration - SUBSYSTEM Zone

This section allows to configure the zones for each fiber connected to the OTS30xx. In the upper part of the section it's possible to select the fibro channel using the left/right arrow. Once selected the fibro channel proceed defining the associated zones.

The zones can be configured in two different ways:

**Automatically:** Zones are generated automatically by the system on the basis of the following data provided by the Fibro Manager :

- Fiber length (mt) : is the length of the optic fiber cable defined by the Fibro Manager in the section : Zone configuration – “effective fiber length” (see the right upper part of the screen)
- Number of zones or Length of zones : These data comes always from the Fibro Manager section “Generate Zones”

All zones generated by automatically configuration have the same length, if there are zones with different lengths from other, you must configure them manually.

**Manually:** This configuration allows to manually configure the length of all zones. In this mode is possible have zones with different lengths. The steps are:

- Automatically generate zones according to their number;
- Export the configuration via "Export" button;
- Open the csv file generated and edit fields:
  - ZONE\_NAME: description of the zone;
  - ZONE\_START: start position of the zone, expressed in meters (eg. 100,00);
  - ZONE\_END: end position of the zone, expressed in meters (eg. 200,00).

Important: FIBRO\_CHANNEL, ALARM\_ID and FAULT\_ID should not be changed and no zone should be overlaid with other.

FIBRE_CHANNEL	ZONE_INDEX	ZONE_NAME	ZONE_START	ZONE_END	ALARM_ID	FAULT_ID
1	1	Zone 1	0,00	100,00	1	2
1	2	Zone 2	100,00	200,00	2	3
1	3	Zone 3	200,00	300,00	3	4
1	4	Zone 4	300,00	400,00	4	5
1	5	Zone 5	400,00	500,00	5	6
1	6	Zone 6	500,00	600,00	6	7
1	7	Zone 7	600,00	700,00	7	8
1	8	Zone 8	700,00	800,00	8	9
1	9	Zone 9	800,00	900,00	9	10
1	10	Zone 10	900,00	1000,00	10	11

Image 19 Manual Configuration - CSV Zone

- Import the csv file via "Import" button.

Once the zone configuration for each fibro channel is complited, select the "Download" button to make active the new configuration.

Selecting the button "Close" without carrying out the command "Download", data is lost.

## 7. OPC TAGS

The following list introduces each tags in the OPC structure with a brief description.

TAG	DESCRIPTION	TYPE	PROPERTY	VALUE	VALUE DESCRIPTION
<b>OPC Server FibroLaser III</b>					
<b>SETTINGS</b>					
<b>.System_status_update[s]</b>	System Status in seconds	Int32	R/W	1-3600	Default value: 2[s]
<b>.Date_XML_Upload</b>	Date last upload configuration data (xml file)	String	R		DD/MM/YYYY hh:mm:ss
<b>.License_State</b>	Indicates the status of the license. If the license is installed but covers fewer tags than configured, tags unlicensed assume the default value (-100)	Int16	R	-1	Unknown
				0	Demo Version starting
				1	Demo Version running
				2	Demo Version Expired
				3	Licensed
<b>SUBSYSTEM*</b>					
<b>.Configured</b>	Subsystem Configured in xml file. If the subsystem is configured implies that opc tags are not updated. To configure a subsystem you need to change the description and do not let 'EXAMPLE'	Int16	R	0	Configured
				10	Not Configured
<b>.ID</b>	OTS30xx ID	Int16	R	1-N	
<b>.Description</b>	OTS30xx Description	String	R		
<b>.PortState</b>	TCP Port State	Int16	R	0	Open
				11	Close
<b>.ConnectionState</b>	OTS30xx Connection State	Int16	R	0	Connected
				7	Disconnected
<b>.SoftwareVersion</b>	OTS30xx S Software version	String	R		Version.Revision.Release Code
<b>.ControllerAddress</b>	OTS30xx LON Address	Int16	R	2-255	
<b>.MeasurementState</b>	measurement state	Int16	R	0	Device is measuring
				12	Device is NOT measuring
<b>.NoFibreBreak</b>	General Fibre Break state	Int16	R	0	None of the fibres involved in the active measurement sequence including spares exhibits a fibre break.
				8	There is one or more fibres involved in the active measurement sequence including spares exhibits a fibre break.
<b>.Output_[0-n]</b>	Output State	Int16	R	0	Inactive
				1	Active
<b>.Input_[0-m]</b>	Input State	Int16	R	0	Inactive
				1	Active
<b>.ExplosionProtection</b>	Explosion protection state	Int16	R	0	Systems without explosion protection option



				13	Explosion protection circuit is installed
<b>.KeySwitch</b>	Key switch state	Int16	R	0	Normal
				9	Test Mode position
<b>.SystemFault</b>	System fault state	Int16	R/W	0	No system fault
				5	System fault If "Ack-Reset behavior" is setted to "Ack-Reset" and it is sent the Acknowledge command to the OTS30xx, this state value changed to Silenced.
				6	Silenced Defined only if "Ack-Reset behavior" is setted to "Ack-Reset", otherwise it is never set. This value is set when you send the command Acknowledge on zone in Fault. Moreover if it is sent the Reset all command to the OTS30xx, this state value changed to Normal.
				COMMANDS	
				30	Acknowledge If "Ack-Reset behavior" is setted to "Ack-Reset", set zone value to Silenced, otherwise not set a value.
				31	Reset all If "Ack-Reset behavior" is setted to "Ack-Reset", set zone value to Normal, otherwise not set a value.
<b>.CommonAlarm</b>	Common alarm state	Int16	R/W	0	No alarm
				1	Alarm If "Ack-Reset behavior" is setted to "Ack-Reset" and it is sent the Acknowledge command to the OTS30xx, this state value changed to Silenced.
				2	Silenced. Defined only if "Ack-Reset behavior" is setted to "Ack-Reset", otherwise it is never set. This value is set when you send the command Acknowledge on zone in alarm. Moreover if it is sent the Reset all command to the OTS30xx, this state value changed to Normal.
				COMMANDS	
				30	Acknowledge If "Ack-Reset behavior" is setted to "Ack-Reset", set zone value to Silenced, otherwise not set a value.
				31	Reset all If "Ack-Reset behavior" is setted to "Ack-Reset", set zone value to Normal, otherwise not set a value.
<b>.InternalDeviceTemperature</b>	Internal device temperature in °C	Float	R		
<b>.InternalDeviceHumidity</b>	Internal device humidity in % rel. humidity	Float	R		If the device is not equipped with an internal humidity sensor, the value is always Unknown
<b>.PowerSupplyDCinputVoltage</b>	Power supply DC input voltage in Volt	Float	R		

<b>.ClockSynchronised</b>	State of controller's clock	Int16	R	0	No synchronised with NTP server
				14	Synchronised with NTP server
<b>.ConfigurationAligned</b>	It indicates whether the zone configuration is aligned or not	Int16	R	0	Aligned
				15	Not Aligned Some zones are not configured
<b>.LastUpdate</b>	Data Last Update	String	R		
<b>.Command</b>	Command SUBSYSTEM	Int16	R/W	COMMANDS:	
				10	Alarm Triggering Locations Request
				11	Alarms Request
				12	Software Version Request
				13	Attendance Check Request
				14	Controller Address Request
				15	Device Status Request
				16	Date And Time Request
				30	Acknowledge
31	Reset all				
<b>SUBSYSTEM*.FIBRE_CHANNEL [1-48]</b>					
<b>.Connection</b>	Connection State	Int16	R	0	Connected
				7	Disconnected
<b>.NoFibreBreak</b>	Fibre Break state	Int16	R	0	Normal
				8	Fibre Break
<b>.Alarm</b>	Alarm state	Int16	R/W	0	Normal
				1	Alarm If "Ack-Reset behavior" is setted to "Ack-Reset" and it is sent the Acknowledge command to the OTS30xx, this state value changed to Silenced.
				2	Silenced Defined only if "Ack-Reset behavior" is setted to "Ack-Reset", otherwise it is never set. This value is set when you send the command Acknowledge on zone in alarm. Moreover if it is sent the Reset all command to the OTS30xx, this state value changed to Normal.
				30	Acknowledge If "Ack-Reset behavior" is setted to "Ack-Reset", set zone value to Silenced, otherwise not set a value.
				31	Reset all If "Ack-Reset behavior" is setted to "Ack-Reset", set zone value to Normal, otherwise not set a value.
<b>.FibreAlarmPositions</b>	Alarm Triggering Locations	String	R		List of meter positions of alarm triggering locations along the sensor fibre. In order to reduce the amount of data, adjacent triggering locations are transmitted only as start and end position. In that case, the end position is transmitted as a negative number
<b>. FireMagnitude</b>	Fire magnitude state	Int16	R	1	Normal

				2	Low
				3	Medium
				4	High
				5	Very High
<b>.FireDirection</b>	Fire direction state	Int16	R	0	Fire static
				1	Fire moving towards fiber end
				2	Fire moving towards controller
<b>.ConfigurationAligned</b>	It indicates whether the zone configuration is aligned or not	Int16	R	0	Aligned
				15	Not Aligned Some zones are not configured
<b>.Command</b>	Command	Int16	R/W	COMMANDS	
				20	Average Zone Temperature Request
				21	Maximum Zone Temperatures Request
				22	Minimum Zone Temperatures Request
<b>SUBSYSTEM*.FIBRE_CHANNEL*.ZONE [0-1000]</b>					
<b>.Index</b>		Int16	R	1-1000	
<b>.Name</b>	Zone Name	String	R		
<b>.Start</b>	Starting position of the zone in meters	Float	R		
<b>.End</b>	End position of the zone in meters	Float	R		
<b>.TemperatureMaximum</b>	Maximum zone temperatures in °C	Float			
<b>.TemperatureAverage</b>	Average zone temperature in °C	Float			
<b>.TemperatureMinimum</b>	Minimum zone temperature in °C	Float			
<b>.Alarm</b>	Alarm state	Int16	R/W	0	Normal
				1	Alarm If "Ack-Reset behavior" is set to "Ack-Reset" and it is sent the Acknowledge command to the OTS30xx, this state value changed to Silenced.
				2	Silenced Defined only if "Ack-Reset behavior" is set to "Ack-Reset", otherwise it is never set. This value is set when you send the command Acknowledge on zone in alarm. Moreover if it is sent the Reset all command to the OTS30xx, this state value changed to Normal.
				COMMANDS	
				30	Acknowledge If "Ack-Reset behavior" is set to "Ack-Reset", set zone value to Silenced, otherwise not set a value.
				31	Reset all If "Ack-Reset behavior" is set to "Ack-Reset", set zone value to Normal, otherwise not set a value.
<b>.Prealarm</b>	Prealarm state	Int16	R/W	0	Normal
				3	Prelarm If "Ack-Reset behavior" is set to "Ack-Reset" and it is sent the

					Acknowledge command to the OTS30xx, this state value changed to Silenced.
				4	Silenced  Defined only if "Ack-Reset behavior" is set to "Ack-Reset", otherwise it is never set. This value is set when you send the command Acknowledge on zone in Prealarm. Moreover if it is sent the Reset all command to the OTS30xx, this state value changed to Normal.
				COMMANDS	
				30	Acknowledge  If "Ack-Reset behavior" is set to "Ack-Reset", set zone value to Silenced, otherwise not set a value.
				31	Reset all  If "Ack-Reset behavior" is set to "Ack-Reset", set zone value to Normal, otherwise not set a value.
<b>.Fault</b>	Fault state	Int16	R/W	0	Normal
				5	Fault  If "Ack-Reset behavior" is set to "Ack-Reset" and it is sent the Acknowledge command to the OTS30xx, this state value changed to Silenced.
				6	Silenced  Defined only if "Ack-Reset behavior" is set to "Ack-Reset", otherwise it is never set. This value is set when you send the command Acknowledge on zone in Fault. Moreover if it is sent the Reset all command to the OTS30xx, this state value changed to Normal.
				COMMANDS	
				30	Acknowledge  If "Ack-Reset behavior" is set to "Ack-Reset", set zone value to Silenced, otherwise not set a value.
				31	Reset all  If "Ack-Reset behavior" is set to "Ack-Reset", set zone value to Normal, otherwise not set a value.
<b>.ZoneAlarmPositions</b>	Alarm Triggering Locations	String	R		List of meter positions of alarm triggering locations along the zone. In order to reduce the amount of data, adjacent triggering locations are transmitted only as start and end position. In that case, the end position is transmitted as a negative number
<b>SUBSYSTEM*.TEMPERATURE_DATA</b>					
<b>. Meter_ [meter]</b>	Current temperature in °C on the fibre position.	Float	R		The <i>temperature_data</i> tags are created only if is enabled the feature "Date Temperatures" in settings panel.  The number of measurement points (expressed in meters) is defined by OTS30xx and depends on its resolution.

				<p>There will be many <i>temperature_data</i> tags how many will be the measuring points, each tag will be differentiated by its position in the optical fiber.</p> <p>The position is expressed in meters [meter].</p> <p>Example: ".Meter_100_5" is relative to the temperature measurement position in the optical fibre to the 100,5 meter.</p>
--	--	--	--	---

**LICENSE NOTE:**

If the license is installed but covers fewer tags than configured, tags unlicensed assume the default value (-100).

**UNKNOWN VALUE:**

If OPC-Server does not receive the state of one tag set the tag value with 'Default Value TAG' defined in Settings configuration if the type tag is a integer else if the type is a string set value with "".